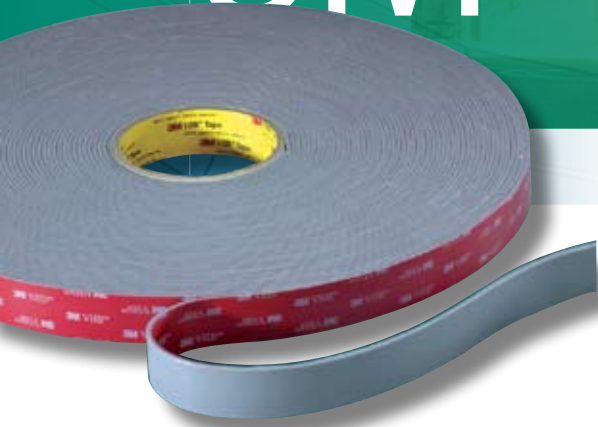


3M™ VHB™ Tape

Build fast to last...



High Strength

- Ultra-strong bonds between most building substrates
- Proven, exceptional levels of adhesion to most traditional materials
- Withstands wind, vibration, and thermal expansion and contraction

Increased Productivity

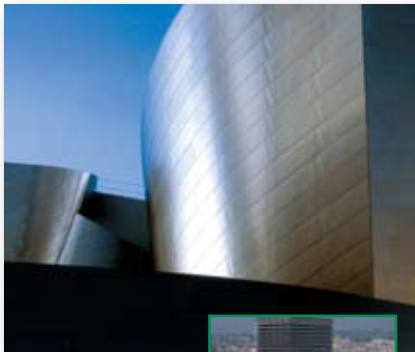
- Immediate handling strength with no curing time
- Improved efficiency with no drilling, or liquid mess and less waste
- Quick and easy application and surface preparation with no strong chemicals

Unrivalled Durability

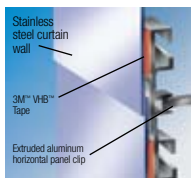
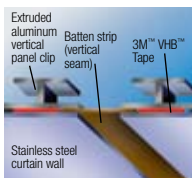
- Removes local stress around fixing joints
- Absorbs shock, reducing vibrations and noise
- Allows thermal expansion between dissimilar materials like metal, glass and plastic
- Eliminates water/weather ingress
- Designed to resist all environmental conditions such as UV, moisture and temperature

Enhanced Aesthetics


- Completely hidden fix creates a visually appealing, cleaner, smoother look
- Avoids unsightly mechanical fixings



Walt Disney Concert Hall,
Los Angeles, CA, USA
Architect: Frank O. Gehry
Curtain wall: Permasteelisa, 2003
Stiffener and frame attachment.



For further information and advice visit www.kemedwards.co.uk or call **01932 754700**



3M™ Dual Lock™ Reclosable Fasteners

Build fast to last...

3M™ Dual Lock™ Reclosable Fasteners is a revolutionary fastening system. Up to 12 times stronger than regular hook and loop, this unique system provides a recloseable hidden fixing that can be opened and closed hundreds of times with no degradation.



High Strength

- Holding strength that is 12 times stronger compared to traditional hook and loop fasteners
- Range of strengths available
- Can be backed with 3M™ VHB™ Tape for a high-strength bond



Increased Productivity

- Fast and easy assembly / dismantling
- No need for precise alignment
- Assembly is quick and easy with no drilling or locating necessary

Unrivalled Durability

- Open and close hundreds of times with no degradation
- Proven performance in the most demanding applications

Enhanced Aesthetics

- Achieve a sleek and smooth finish with easy access
- Avoids unsightly mechanical fixings

For further information and advice visit www.kemedwards.co.uk or call **01932 754700**