



**KEMEDWARDS**  
SITE SUPPLIES NATIONWIDE

**IHL** WALRAVEN

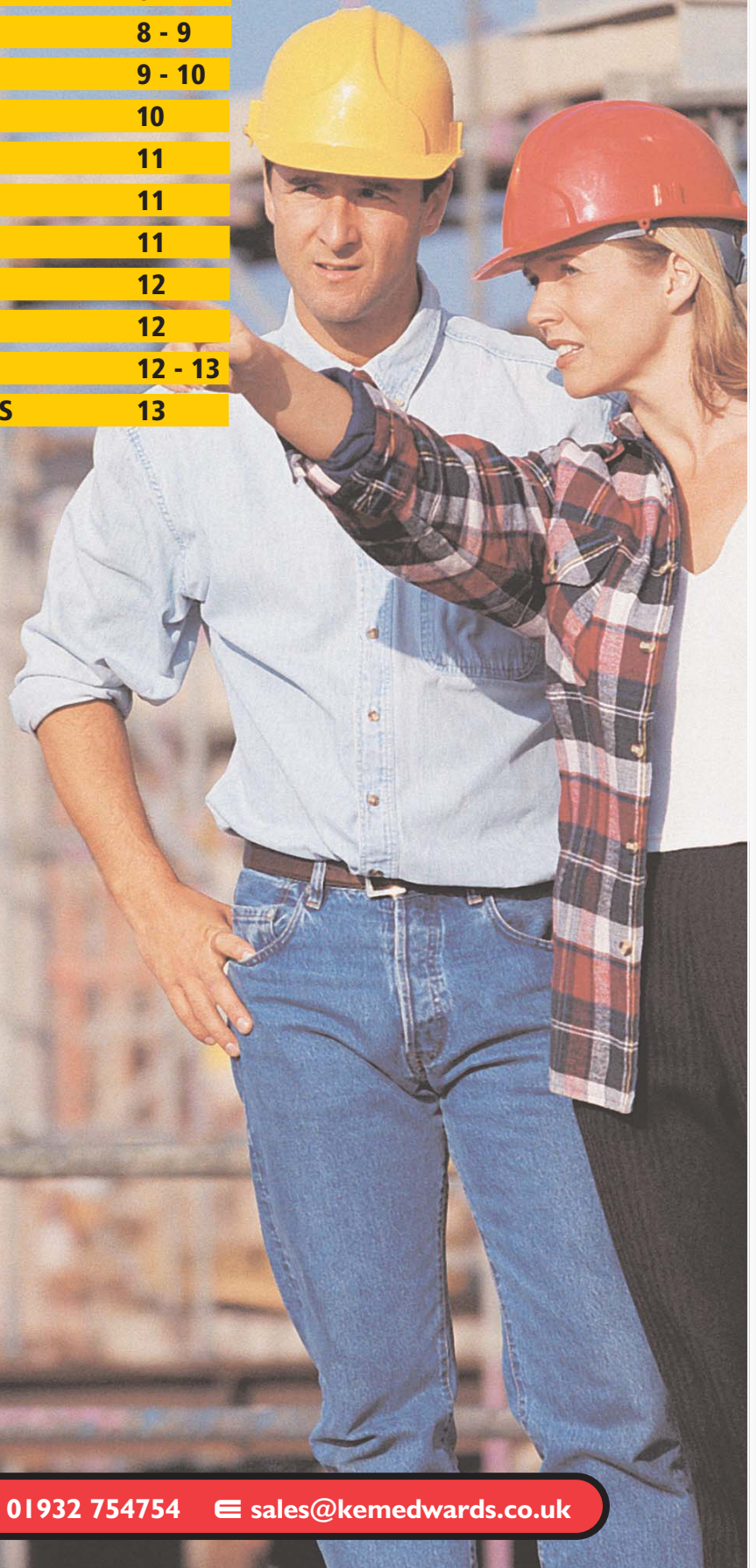


T 01932 754700 F 01932 754754 E [sales@kemedwards.co.uk](mailto:sales@kemedwards.co.uk)

MECHANICAL

## MECHANICAL CONTENTS

PIPE CLAMPS	1 - 3
PHENOLIC BLOCKS	4
SELECTION CHART	5
STANDARD PIPE SIZE CHART	6
WOODBLOCKS	7
CLAMPS AND GUIDES	8
HANGERS AND ACCESSORIES	8 - 9
TALON PIPE CLIPS	9 - 10
RAPID POSITIONING CLIPS	10
STARQUICK® CLIPS	11
STEEL PRODUCTS	11
TWINLOCK TEST PLUGS	11
THERMOMETERS	12
PRESSURE GUAGES	12
PACIFYRE® FOR METAL PIPES	12 - 13
PACIFYRE® FOR PLASTIC PIPES	13



**PIPE CLAMPS**



**DISCOUNT J**

**BISMAT® 2000 PIPE CLAMPS**



Two-part clamp: one side hinged, other side QUICK BISMAT® patented locking system. With lining, zinc plated. Bossed M8/M10.

PRODUCT CODE	SIZE - nb	PIPE MIN (mm)	PIPE MAX (mm)
3403018		15	18
3403023	15	20	23
3403028	20	25	28
3403035	25	31	35
3403039		36	37
3403043	32	40	43
3403053	40	48	53
3403054		54	54
3403063	50	57	63

**TYPE 2-S UNLINED PIPE CLAMP**



Two part clamp: 2 locking screws without lining. Bossed M8/M10, zinc plated

PRODUCT CODE	SIZE - nb	PIPE MIN (mm)	PIPE MAX (mm)
3303017		15	17
3303022	15	18	22
3303030	20	26	30
3303034	25	32	34
3303042		38	42
3303045		41	45
3303051	40	47	51
3303060		54	60
3303064	50	60	64
3303068		62	68
3303076	65	72	76
3303085		79	85
3303089	80	85	89
3303094		90	94
3303105		100	105
3303111		106	111
3303118	100	110	118
3303144	125	139	144
3303169	150	164	169

**FOR OUR COMPLETE RANGE OF PIPE SUPPORTS, PLEASE ASK FOR OUR MANUFACTURERS COMPREHENSIVE CATALOGUE**

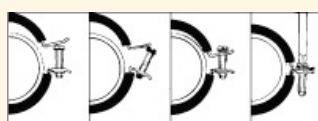
**TYPE 2-S LINED PIPE CLAMP**



Two-part clamp: 2 locking screws, zinc plated with lining. Bossed M8/M10.

PRODUCT CODE	SIZE - nb	PIPE MIN (mm)	PIPE MAX (mm)	€/00
3343019		15	19	
3343023	15	21	23	
3343030	20	26	28	
3343038	25	32	35	
3343046	32	40	43	
3343049	40	44	49	
3343053		50	56	
3343059	50	57	61	
3343064		63	67	
3343078	65	74	80	
3343092	80	83	91	
3343116	100	108	114	
3343135		131	135	
3343141	125	136	139	
3343168	150	159	168	

**BISMAT® 5000 PIPE CLAMPS**



Two part clamp: one side hinged, other side QUICK BISMAT® patented locking system and spacer washers between the flanges. Bossed M8 only

- noise insulation according to DIN 4109
- rubber lining especially developed for application to plastic pipes
- inner part of rubber lining is flush to improve sliding of pipe in clamp
- ageing resistant EPDM rubber lining
- removable spacer washers between the flanges, making the clamp suitable for either location or tight fixing

PRODUCT CODE	PIPE MIN (mm)	PIPE MAX (mm)
3483018	15	18
3483023	20	23
3483028	25	28
3483035	31	35
3483043	40	43
3483053	48	53

As above, 2-part.

PRODUCT CODE	PIPE MIN (mm)	PIPE MAX (mm)
3483067	64	67
3483075	71	75

As above, 2-part. Bossed M10.

PRODUCT CODE	PIPE MIN (mm)	PIPE MAX (mm)
3488018	15	18
3488023	20	23
3488029	25	28
3488035	31	35
3488043	40	43
3488054	48	53

PRODUCT CODE	PIPE MIN (mm)	PIPE MAX (mm)
3488067	64	67
3488076	71	75
3483090	86	90
3483110	106	110

**BISMAT® FLASH CLAMP**



- the locking screw can be tightened by a thumb push
- tested for fire safety
- noise insulation according to NEN 5077 (DIN 4109)
- ageing resistant EPDM rubber lining
- made of steel 1.0332

Bossed M8

PRODUCT CODE	PIPE MIN (mm)	PIPE MAX (mm)
3373018	15	18
3373023	20	23
3373028	25	28
3373035	32	35
3373043	40	43
3373051	48	51

**BISMAT® FLASH CLAMP**

Same as above, bossed M8/M10

PRODUCT CODE	PIPE MIN (mm)	PIPE MAX (mm)
3374018	15	18
3374023	20	23
3374028	25	28
3374035	32	35
3374043	40	43
3374051	58	51

**BIFIX® 300 QUICK LOCK UNLINED PIPE CLAMP**



Two part clamp: 2 locking screws: one side with WM quick locking system.

Zinc plated.

Bossed M10

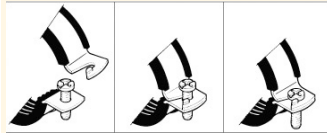
- WM quick locking system for fast and secure fixing (for vertical pipes keep open side of the slots down)

PRODUCT CODE	SIZE - nb	PIPE MIN (mm)	PIPE MAX (mm)
3023022	15	18	22
3023030	20	26	30
3023034	25	32	34
3023042	32	38	42
3023051	40	47	51
3023060	50	54	60
3023068		62	68
3023076	65	72	76
3023085		79	85



PRODUCT CODE	SIZE - nb	PIPE MIN (mm)	PIPE MAX (mm)
3023089	80	85	89
3023094		90	94
3023105		100	105
3023111		106	111
3023118	100	110	118
3023127		122	127
3023134		129	134
3023144	125	139	144
3023151		146	151
3023155		149	155
3023162		157	162
3023169	150	164	169
3023180		172	180
3023190		180	190
3023199	175	190	190
3023219	200	212	219

### BIFIX® 1301 LINED PIPE CLIPS



Two part clamp: 2 locking screws: one side with WM quick locking system for fast and secure fixing.

Bossed M10 only

- WM quick locking system for fast and secure fixing (for vertical pipes keep open side of the slots down)
- noise insulation according to DIN 4109
- ageing resistant rubber lining

PRODUCT CODE	SIZE - (nb)	PIPE MIN (mm)	PIPE MAX (mm)
3123015		11	15
3123018		14	18
3123023	15	19	23
3123029	20	24	29
3123035	25	30	35
3123043	32	38	43
3123054	40	48	54
3123063	50	57	63
3123067		64	67
3123076	65	70	76
3123091	80	86	91
3123106		100	106
3123116	100	108	116
3123132		124	132
3123141	125	133	141
3123168	150	159	168
3123210		200	210
3123219	200	210	219

### HEAVY DUTY PIPE CLAMPS



Zinc/cobalt plated two part clamp: 2 locking screws

- Strong version for extreme heavy loads
- Very superior resistance to corrosion

Bossed M8/M10

PRODUCT CODE	SIZE (nb)	PIPE MIN (mm)	PIPE MAX (mm)
33033023	15	19	23
33033030	20	25	30

PRODUCT CODE	SIZE (nb)	PIPE MIN (mm)	PIPE MAX (mm)
33033036	25	31	36
33033045		40	45
33033052	40	47	52
33033058		53	58
33033065		59	65
33033071	50	66	71

Bossed M10/M12

PRODUCT CODE	SIZE (nb)	PIPE MIN (mm)	PIPE MAX (mm)
33043078		72	78
33043085	65	79	85
33043092		86	92
33043106	80	98	106
33043116	100	108	116
33043133		125	133
33043140	125	132	140
33043154		148	154
33043169	150	159	169
33043183		173	183
33043202		192	202
33043219		208	218

Bossed M16

PRODUCT CODE	SIZE (nb)	PIPE MIN (mm)	PIPE MAX (mm)
33063227	200	217	227
33063254		244	254
33063264		267	279
33063279	250	279	289
33063325	300	315	325

### CAST-IRON PIPE CLAMPS



Two part clamp: one side hinged, other side with locking screw (nominal bore 250 and 300 with 2 hexagon locking screws and nuts) Hot dip galvanised. Bossed M10, up to 200nb. 12.5mm plain hole for 250 and 300nb

PRODUCT CODE	SIZE (nb)	PIPE MIN (mm)	PIPE MAX (mm)
4281066	50	60	66
4281085	70	79	85
4281089	80	83	89
4281116	100	100	116
4281139	125	133	139
4281165	150	159	165
4281215	200	210	215
4281274	250	269	274
4281326	300	321	326

### BIFIX® 412 UNLINED SPIRAL TUBE CLAMP



Two part clamp: 2 locking screws: one side with WM quick locking system for fast and secure fixing (for vertical pipes keep open side of the slots down).

Zinc plated.  
Bossed M8

PRODUCT CODE	PIPE MAX (mm)
4125063	63
4125080	80
4125100	100
4125112	112
4125125	125
4125150	150
4125160	160
4125180	180
4125200	200
4125225	225
4125250	250
4125280	280
4125300	300
4125315	315
4125355	355
4125400	400

### BIFIX® 413 LINED SPIRAL TUBE CLAMP



Two part clamp: 2 locking screws: one side with WM quick locking system for fast and secure fixing (for vertical pipes keep open side of the slots down).

Bossed M8

PRODUCT CODE	PIPE MAX (mm)
4135080	80
4135100	100
4135125	125
4135150	150
4135160	160
4135180	180
4135200	200
4135225	225
4135250	250
4135280	280
4135300	300
4135315	315
4135355	355
4135400	400

### DUCTWORK SUPPORT BRACKETS



Pre-galvanised type 409 ductwork support brackets, bossed M8, with rubber bush

PRODUCT CODE

4125001	L type
4125003	Z type
4125005	A type

**FOR OUR COMPLETE RANGE OF PIPE SUPPORTS, PLEASE ASK FOR OUR MANUFACTURERS COMPREHENSIVE CATALOGUE**

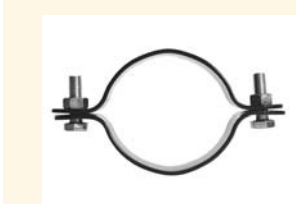
## SPLIT BAND CLIP (TYPE IH100)



For steel pipe, zinc plated. Other finishes available on request.

PRODUCT CODE	SIZE - (nb)
B4103021	15
B4103027	20
B4103034	25
B4103042	32
B4103048	40
B4103060	50
B4103076	65
B4103089	80
B4103114	100
B4103140	125
B4103168	150
B4103194	175
B4103219	200
B4103245	225
B4103273	250
B4103323	300
B4103355	350
B4103406	400
B4103457	450
B4103508	500
B4103559	550
B4103610	600

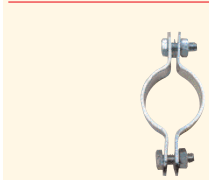
## SPLIT BAND CLIP (TYPE IH140)



For copper pipe, nylon coated.

PRODUCT CODE	SIZE - OD (mm)
B4106015	15
B4106022	22
B4106028	28
B4106035	35
B4106042	42
B4106054	54
B4106066	66
B4106076	76
B4106108	108
B4106133	133
B4106159	159

## OVERSIZE SPLIT BAND CLIP



For fixing over insulation, zinc plated. Other finishes available.

PRODUCT CODE	SIZE - OD (mm)
B4093046	46
B4093053	53
B4093056	56
B4093063	63
B4093066	66
B4093070	70
B4093073	73
B4093077	77

PRODUCT CODE	SIZE - OD (mm)
B4093081	81
B4093083	83
B4093085	85
B4093089	89
B4093092	92
B4093096	96
B4093100	100
B4093103	103
B4093106	106
B4093109	109
B4093114	114
B4093117	117
B4093122	122
B4093127	127
B4093132	132
B4093139	139
B4093143	143
B4093148	148
B4093152	152
B4093155	155
B4093159	159
B4093163	163
B4093168	168
B4093172	172
B4093176	176
B4093180	180
B4093183	183
B4093190	190
B4093193	193
B4093196	196
B4093202	202
B4093205	205
B4093212	212
B4093216	216
B4093220	220
B4093225	225
B4093232	232
B4093236	236
B4093240	240
B4093244	244
B4093250	250
B4093254	254
B4093260	260
B4093262	262
B4093265	265
B4093270	270
B4093272	272
B4093275	275
B4093280	280
B4093284	284
B4093286	286
B4093289	289
B4093295	295
B4093302	302
B4093305	305
B4093315	315
B4093320	320
B4093325	325
B4093335	335

## FILBOW CLAMPS



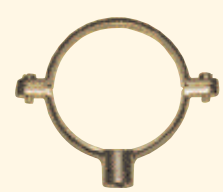
- For the suspension of pipe work used in fire sprinkler installations
- Carries factory mutual approval
- Available to suit a wide range of pipe sizes

Material: mild steel strip to BS EN 10142-FeP02 Finish: Zinc coated grade G275N A-C

PRODUCT CODE	NOMINAL BORE
FIL25	25
FIL32	32
FIL40	40

PRODUCT CODE	NOMINAL BORE
FIL50	50
FIL65	65
FIL80	80
FIL100	100
FIL125	125
FIL150	150
FIL200	200

## BRASS MUNSEN RINGS



M10 metric thread.

PRODUCT CODE	TUBE O.D SIZE (mm)
12BMR	12
15BMR	15
22BMR	22
28BMR	28
35BMR	35
42BMR	42
54BMR	54
67BMR	67
76BMR	76
108BMR	108
133BMR	133
159BMR	159

## GALVANISED MUNSEN RINGS



PRODUCT CODE	SIZE nb
15GMR	15
20GMR	20
25GMR	25
32GMR	32
40GMR	40
50GMR	50
65GMR	65
80GMR	80
100GMR	100
125GMR	125
150GMR	150

## SELF COLOUR MUNSEN RINGS



PRODUCT CODE	TUBE O.D SIZE (mm)
15MR	15
20MR	20
25MR	25
32MR	32
40MR	40
50MR	50
65MR	65
80MR	80
100MR	100
125MR	125
150MR	150



**PHENOLIC BLOCKS**

**DISCOUNT R**



Load bearing insulation ring made from phenolic foam according to ISO 9001 for use with steel, stainless steel, copper and plastic pipes.

- Foil covering
- Metal spreader plate above 40nb
- Available in standard thickness: 15,20,25,30,40,50mm
- Other sizes available on request
- Standard length 100mm to 125mm nb length 125mm 150-200nb
- Free from CFC's and HCFC's
- Density <159mm OD pipe – 80kg/m<sup>3</sup>  
>168mm OD pipe – 120 kg/m<sup>3</sup>
- Free from CFC's and HCFC's
- Temperature resistance from -180°C to +120°C
- K value 0,030 to 0,032 W/m C at 10°C
- Class O fire rated to BS 476/7
- 5% smoke emission to BS 5111
- Negligible water absorption
- Ignitability BS476 Pt5 Class 'P'

**PHENBLOX® 15mm THICK**

PRODUCT CODE	SIZE (nb) STEEL	SIZE (mm) OD/CU
8901015015		15
8901015017		17
8901015021	15	22
8901015024		24
8901015027	20	28
8901015030		30
8901015032		32
8901015034	25	35
8901015037		37
8901015040		40
8901015042	32	42
8901015044		44
8911015048	40	48
8911015050		50
8911015054		54
8911015056		56
8911015060	50	60
8911015063		63
8911015066		66
8911015076	65	76
8911015089	80	89
8911015108		108
8911015114	100	114
8911015133		133
8911015140	125	140
8911015159		159
8911215168	150	168
8911215219	200	219

**PHENBLOX® 20mm THICK**

PRODUCT CODE	SIZE (nb) STEEL	SIZE (mm) OD/CU
8901020015		15
8901020017		17
8901020021	15	22
8901020024		24
8901020027	20	28
8901020030		30
8901020032		32
8901020034	25	35
8901020037		37
8901020040		40
8901020042	32	42

PRODUCT CODE	SIZE (nb) STEEL	SIZE (mm) OD/CU
8901020044		44
8911020048	40	48
8911020050		50
8911020054		54
8911020056		56
8911020060	50	60
8911020063		63
8911020066		66
8911020076	65	76
8911020089	80	89
8911020108		108
8911020114	100	114
8911020133		133
8911020140	125	140
8911020159		159
8911220168	150	168
8911220219	200	219
8911220273	250	273

**PHENBLOX® 25mm THICK**

PRODUCT CODE	SIZE (nb) STEEL	SIZE (mm) OD/CU
8901025015		15
8901025017		17
8901025021	15	22
8901025024		24
8901025027	20	28
8901025030		30
8901025032		32
8901025034	25	35
8901025037		37
8901025040		40
8901025042	32	42
8901025044		44
8911025048	40	48
8911025050		50
8911025054		54
8911025056		56
8911025060	50	60
8911025063		63
8911025066		66
8911025076	65	76
8911025089	80	89
8911025108		108
8911025114	100	114
8911025133		133
8911025140	125	140
8911025159		159
8911225168	150	168
8911225219	200	219
8911225273	250	273

**PHENBLOX® 30mm THICK**

PRODUCT CODE	SIZE (nb) STEEL	SIZE (mm) OD/CU
8901030015		15
8901030017		17
8901030021	15	22
8901030024		24
8901030027	20	28
8901030030		30
8901030032		32
8901030034	25	35
8901030037		37
8901030040		40
8901030042	32	42
8901030044		44
8911030048	40	48
8911030050		50
8911030054		54
8911030056		56
8911030060	50	60
8911030063		63
8911030066		66
8911030076	65	76
8911030089	80	89
8911030108		108
8911030114	100	114
8911030133		133
8911030140	125	140

PRODUCT CODE	SIZE (nb) STEEL	SIZE (mm) OD/CU
8911030159		159
8911230168	150	168
8911230219	200	219
8911230273	250	273

**PHENBLOX® 40mm THICK**

PRODUCT CODE	SIZE (nb) STEEL	SIZE (mm) OD/CU
8901040015		15
8901040017		17
8901040021	15	22
8901040027	20	28
8901040030		30
8901040032		32
8901040034	25	35
8901040037		37
8901040040		40
8901040042	32	42
8901040044		44
8911040048	40	48
8911040050		50
8911040054		54
8911040056		56
8911040060	50	60
8911040063		63
8911040066		66
8911040076	65	76
8911040089	80	89
8911040108		108
8911040114	100	114
8911040133		133
8911040140	125	140
8911040159		159
8911240168	150	168
8911240219	200	219
8911240273	250	273

**PHENBLOX® 50mm THICK**

PRODUCT CODE	SIZE (nb) STEEL	SIZE (mm) OD/CU
8901050015		15
8901050021	15	22
8901050027	20	28
8901050034	25	35
8901050042	32	42
8911050048	40	48
8911050050		50
8911050054		54
8911050056		56
8911050060	50	60
8911050063		63
8911050066		66
8911050076	65	76
8911050089	80	89
8911050108		108
8911050114	100	114
8911050133		133
8911050140	125	140
8911050159		159
8911250168	150	168
8911250219	200	219
8911250273	250	273

**APPLICATION GUIDES**  
[www.kemedwards.co.uk](http://www.kemedwards.co.uk)

## SELECTION CHART



**PHENOLIC BLOCK  
PRODUCT TYPE [A]**



**BIFIX 300 UNLINED M10  
PRODUCT TYPE [B]**



**SPLIT BAND CLIPS  
PRODUCT TYPE [C]**

PIPE nb	SIZE (mm) cu	SIZE (mm)	PRODUCT TYPE	THICKNESS					
				15 (mm)	20 (mm)	25 (mm)	30 (mm)	40 (mm)	50 (mm)
-	-	15	A	8901015015	8901020015	8901025015	8901030015	8901040015	8901050015
			B	3023042	3023060	3023068	3023076	3023094	3023118
			C	B4093046	B4093056	B4093066	B4093077	B4093096	B4093117
15	21	22	A	8901015021	8901020021	8901025021	8901030021	8901040021	8901050021
			B	3023051	3023060	3023076	3023085	3023105	3023125
			C	B4093053	B4093063	B4093073	B4093081	B4093100	B4093122
20	27	28	A	8901015027	8901020027	8901025027	8901030027	8901040027	8901050027
			B	3023060	3023068	3023085	3023089	3023111	3023127
			C	B4093063	B4093070	B4093077	B4093089	B4093109	B4093127
25	34	35	A	8901015034	8901020034	8901025034	8901030034	8901040034	8901050034
			B	3023068	3023076	3023085	3023094	3023118	3023134
			C	B4093066	B4093077	B4093085	B4093096	B4093177	B4093139
32	42	42	A	8901015042	8901020042	8901025042	8901030042	8901040042	8901050042
			B	3023076	3023085	3023094	3023105	3023125	3023144
			C	B4093073	B4093083	B4093092	B4093103	B4093122	B4093134
40	48	-	A	8911015048	8911020048	8911025048	8911030048	8911040048	8911050048
			B	3023076	3023089	3023105	3023111	3023134	3023151
			C	B4093081	B4093089	B4093100	B4093109	B4093132	B4093152
-	-	54	A	8911015054	8911020054	8911025054	8911030054	8911040054	8911050054
			B	3023089	3023094	3023105	3023118	3023134	3023155
			C	B4093089	B4093096	B4093106	B4093114	B4093139	B4093155
50	60	-	A	8911015060	8911020060	8911025060	8911030060	8911040060	8911050060
			B	3023089	3023105	3023111	3023125	3023144	3023162
			C	B4093092	B4093103	B4093114	B4093122	B4093143	B4093163
-	-	66	A	8911015066	891120066	8911025066	8911030066	8911040066	8911050066
			B	3023094	3023105	3023118	3023127	3023151	3023169
			C	B4093096	B4093109	B4093117	B4093127	B4093148	B4093168
65	76	76	A	8911015076	8911020076	8911025076	8911030076	8911040076	8911050076
			B	3023111	3023118	3023127	3023134	3023155	3023180
			C	B4093106	B4093117	B4093127	B4093139	B4093159	B4093176
80	89	-	A	8911015089	8911020089	8911025089	8911030089	8911040089	8911050089
			B	3023125	3023134	3023144	3023151	3023169	3023190
			C	B4093122	B4093132	B4093139	B4093152	B4093172	B4093190
-	-	108	A	8911015108	8911020108	8911025108	8911030108	8911040108	8911050108
			B	3023144	3023155	3023169	3023180	3023190	3023219
			C	B4093143	B4093155	B4093168	B4093176	B4093196	B4093216
100	114	-	A	8911015114	8911020114	8911025114	8911030114	8911040114	8911050114
			B	3023144	3023155	3023169	3023180	3023190	3023219
			C	B4093143	B4093155	B4093168	B4093176	B4093196	B4093216
-	-	133	A	8911015133	8911020133	8911025133	8911030133	8911040133	8911050133
			B	3023169	3023180	3023190	3023199	3023219	N/A
			C	B4093163	B4093176	B4093183	B4093193	B4093216	B4093236
125	140	-	A	8911015140	8911020140	8911025140	8911030140	8911040140	8911050140
			B	3023169	3023180	3023190	3023199	3023219	N/A
			C	B4093172	B4093180	B4093190	B4093202	B4093220	B4093240
-	-	159	A	8911015159	8911020159	8911025159	8911030159	8911040159	8911050159
			B	3023190	3023199	3023199	3023219	N/A	N/A
			C	B4093190	B40932202	B4093212	B4093220	B4093240	B4093260
150	168	-	A	8911215168	8911220168	8911225168	8911230168	8911240168	8911250168
			B	3023199	3023219	3023219	N/A	N/A	N/A
			C	B4093202	B4093212	B4093220	B4093232	B4093250	B4093270



## STANDARD PIPE SIZES

STEEL			COPPER
SIZE (inch) nb	SIZE (metric) nb	OUTSIDE DIAMETER OF PIPE (mm)	OUTSIDE DIAMETER OF PIPE (mm)
1/2	15	21.3	15
3/4	20	26.9	22
1	25	33.7	28
1 1/4	32	42.4	35
1 1/2	40	48.3	42
2	50	60.3	54
2 1/2	65	76.1	66/67
3	80	88.9	76
4	100	114.3	108
5	125	139.7	133
6	150	168.3	159
7	175	193.7	-
8	200	219.1	219
9	225	244.5	-
10	250	273	270
12	300	323.9	323
14	350	355.6	-
16	400	406	-
18	450	457	-
20	500	508	-
22	550	559	-
24	600	610	-

FOR PLASTIC, STAINLESS AND MANNESMAN PIPE, ALL PIPE OUTSIDE DIAMETERS ARE DEPENDANT ON PIPE SPECIFICATION

## LOAD/WEIGHT CONVERSION DETAILS

1 N = 98g (0.098 kg)

10 N = 980g (0.098 kg)

100 N = 9.81 kg

1,000 N = 1 KN = 98.06 kg

10,000 N = 10 KN = 980.6 kg

1 kg = 10.2 N

10 kgs = 102 N

100 kgs = 1,020 N = 1.02 KN

1,000 kgs = 10,200 N = 10.2 KN

BROWSE THE WEB  
[www.kemedwards.co.uk](http://www.kemedwards.co.uk)



## WOODBLOCKS

**DISCOUNT M**

Hardwood loadbearing insulation rings supplied in two halves.



### 15mm THICK

PRODUCT CODE	SIZE - (nb)	SIZE - OD (mm)
B2315015		15
B2315021	15	22
B2315027	20	28
B2315034	25	35
B2315042	32	42
B2315048	40	
B2315054		54
B2315060	50	
B2315066		66
B2315076	65	76
B2315089	80	
B2315108		108
B2315114	100	
B2315140	125	
B2315168	150	

### 20mm THICK

PRODUCT CODE	SIZE - (nb)	SIZE - OD (mm)
B2320015		15
B2320021	15	22
B2320027	20	28
B2320034	25	35
B2320042	32	42
B2320048	40	
B2320054		54
B2320060	50	
B2320066		66
B2320076	65	76
B2320089	80	
B2320108		108
B2320114	100	
B2320140	125	
B2320168	150	

### 25mm THICK

PRODUCT CODE	SIZE - (nb)	SIZE - OD (mm)
B2325015		15
B2325021	15	22
B2325027	20	28
B2325034	25	35
B2325042	32	42
B2325048	40	
B2325054		54
B2325060	50	
B2325066		66
B2325076	65	76
B2325089	80	
B2325108		108
B2325114	100	
B2325140	125	
B2325168	150	

### 30mm THICK

PRODUCT CODE	SIZE - (nb)	SIZE - OD (mm)
B2330015		15
B2330021	15	22
B2330027	20	28
B2330034	25	35
B2330042	32	42
B2330048	40	
B2330054		54
B2330060	50	
B2330066		66
B2330076	65	76
B2330089	80	
B2330108		108
B2330114	100	
B2330140	125	
B2330168	150	

### 40mm THICK

PRODUCT CODE	SIZE - (nb)	SIZE - OD (mm)
B2340015		15
B2340021	15	22
B2340027	20	28
B2340034	25	35
B2340042	32	42
B2340048	40	
B2340054		54
B2340060	50	
B2340066		66
B2340076	65	76
B2340089	80	
B2340108		108
B2340114	100	
B2340140	125	
B2340168	150	

### 50mm THICK

PRODUCT CODE	SIZE - (nb)	SIZE - OD (mm)
B2350015		15
B2350021	15	22
B2350027	20	28
B2350034	25	35
B2350042	32	42
B2350048	40	
B2350054		54
B2350060	50	
B2350066		66
B2350076	65	76
B2350089	80	
B2350108		108
B2350114	100	
B2350140	125	
B2350168	150	

## CLAMPS AND GUIDES

**DISCOUNT J**

### SADDLE CLAMP FOR STEEL PIPE (TYPE IH104)



Zinc plated.

PRODUCT CODE	SIZE (nb)	FIXING HOLE Ø (mm)
B3103021	15	7
B3103027	20	7
B3103034	25	7

PRODUCT CODE	SIZE (nb)	FIXING HOLE Ø (mm)
B3103042	32	11
B3103048	40	11
B3103060	50	11
B3103076	65	14
B3103089	80	14
B3103114	100	14
B3103140	125	14
B3103168	150	14
B3103194	175	18
B3103219	200	18
B3103245	225	18
B3103273	250	18
B3103324	300	22

### SADDLE CLAMP FOR COPPER PIPE (TYPE IH143)



Nylon coated.

PRODUCT CODE	SIZE (mm)	FIXING HOLE Ø (mm)
B3106015	15	7
B3106022	22	7
B3106028	28	7
B3106035	35	7
B3106042	42	11
B3106054	54	11
B3106066	66	14
B3106076	76	14
B3106108	108	14
B3106133	133	14
B3106159	159	14

### SADDLE GUIDE FOR STEEL PIPE (TYPE IH103)



Zinc plated.

PRODUCT CODE	SIZE (nb)	FIXING HOLE Ø (mm)
B3203024	15	7
B3203030	20	7
B3203037	25	7
B3203046	32	11
B3203054	40	11
B3203064	50	11
B3203082	65	14
B3203095	80	14
B3203120	100	14
B3203146	125	14
B3203176	150	14
B3203206	175	18
B3203232	200	18
B3203257	225	18
B3203280	250	18



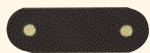
## SADDLE GUIDE FOR COPPER PIPE (TYPE IH142)



Nylon coated.

PRODUCT CODE	SIZE (mm)
B3206017	15
B3206024	22
B3206030	28
B3206038	35
B3206045	42
B3206058	54
B3206070	66
B3206080	76
B3206112	108
B3206140	133
B3206165	159

## POLYSTRIPS FOR SADDLE GUIDES FOR COPPER PIPE



PRODUCT CODE	SIZE (mm)
B9111061	15
B9111072	22
B9111075	28
B9111083	35
B9111102	42
B9111114	54
B9114138	66
B9114146	76
B9114182	108
B9114216	133
B9114236	159

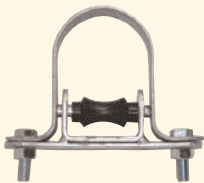
## ROLLER CHAIR AND GUIDE FOR STEEL PIPE (TYPE IH120)



Zinc plated.

PRODUCT CODE	SIZE (nb)
B6113076	65
B6113089	80
B6113114	100
B6113140	125
B6113168	150
B6113193	175
B6113219	200
B6113273	250
B6113323	300

## ROLLER CHAIR AND GUIDE FOR COPPER AND SMALL nb STEEL PIPE



Zinc plated. (IH120A/IH147A). Base only.

PRODUCT CODE	SIZE (nb)	SIZE(mm)
B6153015		15
B6153022	15	22
B6153028	20	28
B6153034	25	35
B6153042	32	42
B6153048	40	
B6153054		54
B6153060	50	

## U-BOLTS



## THREAD M6

These versatile bolts are useful pipe supports.

Standard and extended leg (E) available.  
Material: Mild steel to BS970 part 3 1991  
Finish: Electro-zinc plated.

PRODUCT CODE	PIPE nb (mm)	PIPE O/D (mm)	Internal WIDTH (mm)	THREA LENGT (mm)
BOLU15	15	22	24	25
BOLU20	20	27	29	30
BOLU25	25	34	37	30
BOLU25E	25	34	37	60

## THREAD M10

PRODUCT CODE	PIPE nb (mm)	PIPE O/D (mm)	Internal WIDTH (mm)	THREA LENGT (mm)
BOLU32	32	42	45	35
BOLU32E	32	42	45	75
BOLU40	40	48	51	40
BOLU40E	40	48	51	80
BOLU50	50	60	63	40
BOLU50E	50	60	63	80
BOLU65	65	76	80	40
BOLU65E	65	76	80	80

## THREAD M12

PRODUCT CODE	PIPE nb (mm)	PIPE O/D (mm)	Internal WIDTH (mm)	THREA LENGT (mm)
BOLU80	80	89	93	40
BOLU80E	80	89	93	80
BOLU100	100	114	120	40
BOLU100E	100	114	120	80
BOLU125	125	140	146	40
BOLU125E	125	140	146	80
BOLU150	150	165	171	50
BOLU150E	150	165	171	115

## HANGERS AND ACCESSORIES

**DISCOUNT**

## STANDARD GANG HANGER (TYPE IH190)



Self colour.

PRODUCT CODE	LENGTH (mm)
B9300020	200
B9300030	300
B9300038	380
B9300045	450
B9300060	600
B9300075	750
B9300090	900
B9300120	1200
B9300150	1500
B9300180	1800
B9300210	2100
B9300240	2400
B9300270	2700
B9300300	3000

## BRIDGE PIECE (TYPE IH191)



Zinc plated.

PRODUCT CODE	HOLE Ø (mm)
B9320008	7
B9320012	11
B9320014	14
B9320017	17

## BRIDGE PIECE (TYPE IH191)



Heavy version, self colour.

PRODUCT CODE	HOLE Ø (mm)
B9321012	11
B9321014	14
B9321017	17
B9321022	22
B9321027	27

**LATEST PRODUCTS**  
[www.kemedwards.co.uk](http://www.kemedwards.co.uk)

## LINK EYE (TYPE IH212)



Zinc plated. M12 and M16 pre-galvanised.

PRODUCT CODE	SIZE
B6762006	M6
B6762010	M10
B6762012	M12
B6763016	M16

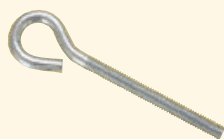
## BOW NUT (TYPE IH270)



Cast iron zinc plated bow nut manufactured to BS 3974: Part 1 1974.

PRODUCT CODE	SIZE
B6983010	M10
B6983012	M12
B6983016	M16
B6983020	M20
B6983024	M24

## THREADED EYE-BOLTS



Folded eye-bolts (open eye)  
Zinc plated

PRODUCT CODE	SIZE (DIA x OVERALL LENGTH)
BOLE680	M6X80
BOLE6150	M6X150
BOLE6225	M6X225
BOLE6300	M6X300
BOLE880	M8X80
BOLE1080	M10X80
BOLE10100	M10X100
BOLE10150	M10X150
BOLE10225	M10X225
BOLE10300	M10X300
BOLE1280	M12X80
BOLE12100	M12X100
BOLE12150	M12X150
BOLE12225	M12X225
BOLE12300	M12X300
BOLE16150	M16X150
BOLE16225	M16X225
BOLE16300	M16X300

## PIVOT SWIVEL HANGERS



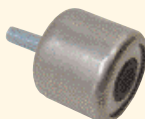
Steel zinc plated  
Short body (15mm)

PRODUCT CODE	THREAD LENGTH (mm)	THREAD SIZE
6642008	15	M8
6642010	15	M10
6644010	30	M10

Long body (35mm)

PRODUCT CODE	THREAD LENGTH (mm)	THREAD SIZE
6642108	15	M8
6642110	15	M10
6642112	FEMALE	M12

## NOISE INSULATING FIXING POINT



Noise insulation to DIN 4190 by TPE rubber.  
All metal parts made of stainless steel.

PRODUCT CODE	SIZE
6697004	M8
6697005	M10

## BRASS ROCKER NUTS (TYPE IH210)



PRODUCT CODE	SIZE
B6729010	M10
B6729012	M12
B6729016	M16

## WALL BACK PLATE



For fixing of threaded rod to wall or ceiling.

PRODUCT CODE	SIZE	FINISH
6703009	M8/M10	Zinc Plated
6703010	M10	Zinc Plated
6703012	M12	Zinc Plated
CB1004	M10	Brass

## THREAD ADAPTORS



Thread adaptor to vary the size in the connection of clamps etc. Mild steel bright zinc plated.

PRODUCT CODE	MALE THREAD	FEMALE THREAD
6473008	M6	M8
6473206	M8	M6
6473210	M8	M10
6473308	M10	M8
6473312	M10	M12
6473408	M12	M8
6473410	M12	M10
6473512	M10	M12

## TALON® PIPE CLIPS



- Designed for ease of use
- The clips will hold pipes firmly without locking the top as a temporary support during installation
- Every talon clip snaps shut with an audible click when secured
- Manufactured with premium grade polymer formulated for low temperature impact resistance and high temperature tensile strength
- Tested from -20°C to +80°C
- The integral hinge moulded into the clip can be flexed more than a million times without breaking
- Talon clips provide complete 360° pipe retention tested to over 100lbs

PRODUCT CODE	PIPE DIAMETER (mm)	TO SUIT WOODSCREW NO.5
15TC	15	8/10
22TC	22	8/10
28TC	28	8/10

## DOUBLE

PRODUCT CODE	PIPE DIAMETER (mm)	TO SUIT WOODSCREW NO.5
15TCD	15	8/10
22TCD	22	8/10



## SPACER FOR TALON CLIPS



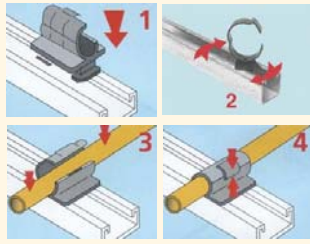
- The one size spacer fits all talon clips and will increase the wall clearance from 12mm to 25mm
- Spacers can be stacked and each additional spacer gives 13mm more clearance
- Talon clip spacers are the most effective way of fitting pipework insulation as required by water bye-law 49

**PRODUCT CODE**  
TALONS

## RAPID POSITIONING CLIPS

**DISCOUNT**

### CHANNEL CLIPS



- Less than 4% deformation under stresses of upto 40MPa (megapascals)
- High resistance to mechanical stress creep
- Withstands all known solvents, hydrolysis, battery acids and salt solutions
- Low moisture sensitivity
- Stable electrical and vibration properties
- Very good seal to water, gases, solvents
- Less yellowing at high temperatures than other polyamides, good resistance to UV light
- Melting point +220°C, underwriters laboratory rating of HB
- Under normal installation no flame spread and toxic emissions insignificant
- Temperature range -40°C to +140°C
- Quick and easy to install
- One piece single handed fixing
- Fits most rails and channels
- No mechanical tightening
- Completely seals pipework
- Eliminates cracks and fractures

PRODUCT CODE	OUTSIDE DIAMETER (mm)
RPC38	9
RPC12	12
RPC58	15
RPC34	20
RPC78	22
RPC118	28
RPC138	35
RPC158	42

All clips are manufactured from a composite polyamide alloy that has the high tensile strength of nylon. More rigid than standard P6 Polyamide.

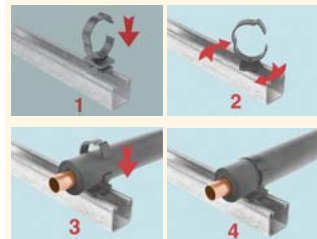
## STUDDING CLIPS



- Secures both pipe and insulation
- Adjusts on thread
- No insulation breaks
- Ideal in cramped ducts or above suspended ceilings
- Climate change levy ECA approval

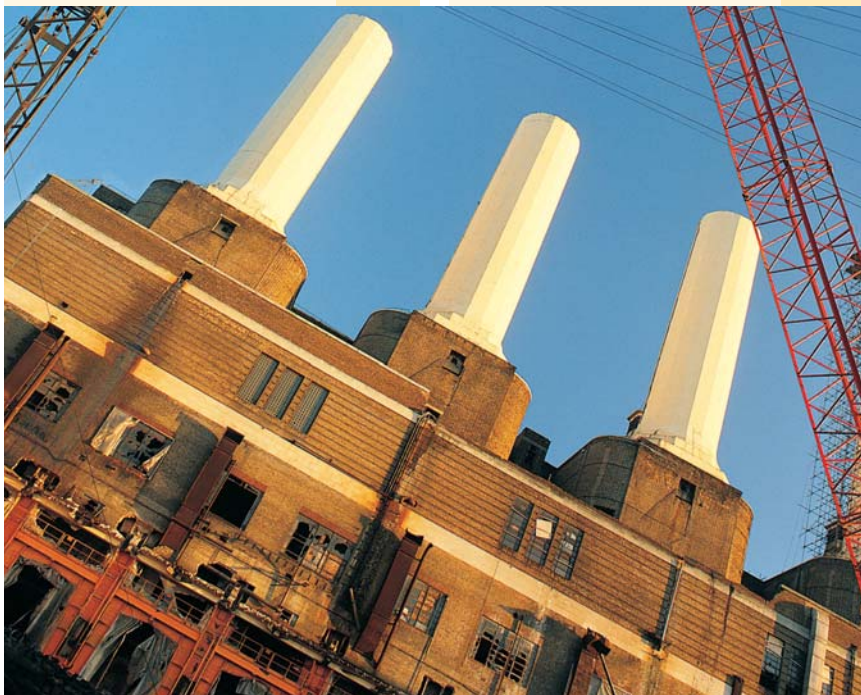
PRODUCT CODE	SIZE	OUTSIDE DIAMETER (mm)
SC08-15	M8	15
SC08-20	M8	20
SC08-22	M8	22
SC08-25	M8	25
SC08-28	M8	28
SC08-32	M8	32
SC08-35	M8	35
SC08-40	M8	40
SC08-42	M8	42
SC08-50	M8	50
SC08-54	M8	54
SC10-15	M10	15
SC10-20	M10	20
SC10-22	M10	22
SC10-25	M10	25
SC10-28	M10	28
SC10-32	M10	32
SC10-35	M10	35
SC10-40	M10	40
SC10-42	M10	42
SC10-50	M10	50
SC10-54	M10	54

## INSULCLIP



- More rigid than standard P6 Polyamide
- No breaks in insulation material
- Eliminates sweating
- Will safely secure copper, plastic & PVC-U high pressure pipe
- RPC channel foot secures simply to standard channel
- Quick and easy to install
- No tools required
- Climate change levy ECA approved

PRODUCT CODE	OUTSIDE DIAMETER (mm)
IC0015	15
IC0020	20
IC0022	22
IC0025	25
IC0028	28
IC0032	32
IC0035	35
IC0040	40
IC0042	42
IC0050	50
IC0054	54



## STARQUICK® CLIPS

DISCOUNT J

starQuick®

**NEW**



Time saving, secure pipe clip.

### Applications:

- sanitary, heating, mechanical and electrical installations  
also suitable for highly corrosive areas such as swimming pools, chemical plants, clean rooms and galvanisation industries

### Suitability:

Suitable for indoor and outdoor applications

### Features and Benefits:

- Totally plastic assembly system
- Corrosion free pipe fixing
- The starQuick clip is closed by offering the pipe into the clip and applying light pressure.
- Secure closure is achieved with no tools.
- Secure fixing guaranteed by clip halves gripping each other, maintaining constant position even under strong axial load
- Clips up to 32mm have a patented profile that makes it possible to tack more than one clip together. An innovative solution for fixing another pipe or cable clip without drilling.
- High quality recyclable plastic, halogen free
- Fire behaviour: UL94-V2
- Temperature: -40°C to +90°C
- Sound insulating effect: -12.2dB(A)
- Quality admissions: CE and KIWA(NL)
- High resistance to chemicals

PRODUCT CODE	PIPE Ø MIN (mm)	PIPE Ø MAX (mm)	ULTIMATE STATIC LOAD (N)
0854010	10	14	500
0854012	12	16	550
0854015	14	18	600
0854018	16	20	700
0854022	20	23	800
0854028	24	28	850
0854031	28	32	900
0854035	32	35	1000
0854038	35	40	1100
0854042	40	44	1200
0854050	44	50	1300
0854054	48	55	1400
0854063	59	65	1500

### DUO BRACKET

For clamps Ø up to 23mm, centre distance 50mm.



PRODUCT CODE  
854000

## NUT



PRODUCT CODE    SIZE

854006            M6  
854308            M8

### STRUT RAIL ADAPTOR



PRODUCT CODE

854331

### RAIL ADAPTOR

For clamps Ø 10 up to 32mm.



PRODUCT CODE

854313

### FIXING RAIL



PRODUCT CODE            LENGTH (M)

854325                            1

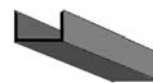


**LATEST PROMOTIONS**  
[www.kemedwards.co.uk](http://www.kemedwards.co.uk)

## STEEL PRODUCTS

DISCOUNT M

### CHANNEL IRON



PRODUCT CODE    LENGTH (M)    SIZE (mm)

IROC                    3            102X51  
IROC6                    6            102X51

### CHANNEL IRON - GALVANISED

PRODUCT CODE    LENGTH (M)    SIZE (mm)

IROCG                    3            102X51  
IROCG6                    6            102X51

### FLAT IRON - SELF COLOUR



PRODUCT CODE    LENGTH (M)    SIZE (mm)

IROF25                    3            25X3

### ANGLE IRON - SELF COLOUR



PRODUCT CODE    LENGTH (M)    SIZE (mm)

IROA22                    3            51X51  
IROA226                    6            51X51

Other profiles and finishes available - Please contact the Sales Office on 01932 754700

### TWINLOK TEST PLUGS

DISCOUNT M



PRODUCT CODE            DESCRIPTION

634000                    Brass  
634001                    Brass Extended  
634009                    Stainless Steel  
634533                    P/Guage adaptor probe



**THERMOMETERS**

**DISCOUNT M**



PRODUCT CODE	DESCRIPTION
634721	Dial test thermometer 45mm dial (C100)

**PRESSURE GAUGES**

**DISCOUNT M**



PRODUCT CODE	DESCRIPTION
634518	0-60 PSI 63mm dial (B100)
634510	0-100 PSI 63mm dial (B100)
634512	0-150 PSI 63mm dial (B100)
634513	0-200 PSI 63mm dial (B100)

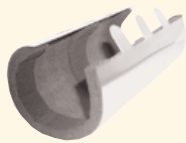


**PACIFYRE® MARK II FIRE**

**STOPS - TYPE 1**

**DISCOUNT P**

**FOR METAL AND INSULATED PIPES**



Standard 205 long for metal uninsulated and insulated pipes. To BS 476 part 20/22 up to full 4 hour rating. L.P.C approved.

Pacifyre® fire sleeves are a one piece, one length (205mm) stainless steel sleeve with closure tabs and slots, having an intumescent lining the full length of the unit with 3 bands of acoustic foam.

The units are wrapped around pipes by hand and simply slid into walls/partitions in seconds, virtually eliminating fitting labour costs and negating the necessity to remember to fit over size pipe sleeves.

Pacifyre® sleeves can be fitted to either horizontal or vertical pipework, do not give off toxic fumes or smoke in the event of a fire, are asbestos free and do not contain any hazardous materials.

No special precautions are therefore required when handling or installing the units, adding further to the cost saving. In the event of a close proximity fire, the lining activates at 140°C and expands to over 16 times its own volume to create a fire proof seal between the pipe and the wall, preventing the spread of fire between building compartments.

NOTE: As the Pacifyre® sleeves are activated at 140°C, it is recommended that the maximum temperature of the pipework in contact with the units does not exceed 120°C.

On pipework above this temperature (HTHW & Steam) or when a vapour barrier is required, it is recommended that compressible insulation (mineral wool/35k phenolic foam) is firstly fitted to the pipework then an oversize Pacifyre® where it passes through the wall. In the event of a fire, the intumescent strip will expand and compress the insulation, thereby forming the necessary fire seal around the pipe.

PRODUCT CODE	OUTSIDE DIAMETER OF PIPE MIN (mm)	OUTSIDE DIAMETER OF PIPE MAX (mm)
2141015017	15	17
2141018020	18	20
2141021023	21	23
2141024026	24	26
2141027029	27	29
2141030032	30	32
2141033035	33	35
2141036038	36	38
2141039041	39	41
2141042044	42	44
2141045047	45	47
2141048050	48	50
2141051053	51	53
2141054056	54	56
2141057059	57	59
2141060062	60	62
2141063065	63	65
2141066068	66	68

PRODUCT CODE	OUTSIDE DIAMETER OF PIPE MIN (mm)	OUTSIDE DIAMETER OF PIPE MAX (mm)
2141069071	69	71
2141072074	72	74
2141075077	75	77
2141078080	78	80
2141081083	81	83
2141084086	84	86
2141087089	87	89
2141090092	90	92
2141093095	93	95
2141096098	96	98
2141099101	99	101
2141102104	102	104
2141105107	105	107
2141108110	108	110
2141111113	111	113
2141114116	114	116
2141117119	117	119
2141120122	120	122
2141123125	123	125
2141126128	126	128
2141129131	129	131
2141132134	132	134
2141135137	135	137
2141138140	138	140
2141141143	141	143
2141144146	144	146
2141147149	147	149
2141150152	150	152
2141153155	153	155
2141156158	156	158
2141159161	159	161
2141162164	162	164
2141165167	165	167
2141168170	168	170
2141171173	171	173
2141174176	174	176
2141177179	177	179
2141180182	180	182
2141183185	183	185
2141186188	186	188
2141189191	189	191
2141192194	192	194
2141195197	195	197
2141198200	198	200
2141201203	201	203
2141204206	204	206
2141207209	207	209
2141210212	210	212
2141213215	213	215
2141216218	216	218
2141219221	219	221
2141222224	222	224
2141225227	225	227
2141228230	228	230
2141231233	231	233
2141234236	234	236
2141237239	237	239
2141240242	240	242
2141243245	243	245
2141246248	246	248
2141249251	249	251
2141252254	252	254
2141255257	255	257
2141258260	258	260
2141261263	261	263
2141264266	264	266
2141267269	267	269
2141270272	270	272
2141273275	273	275
2141276278	276	278
2141279281	279	281
2141283285	283	285
2141286288	286	288
2141289291	289	291
2141292294	291	294
2141295297	295	297
2141298300	298	300
2141301303	301	303
2141304306	304	306



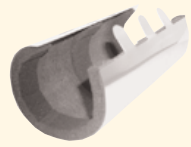
PRODUCT CODE	OUTSIDE DIAMETER OF PIPE MIN (mm)	OUTSIDE DIAMETER OF PIPE MAX (mm)
2141307309	307	306
2141310312	310	312
2141313315	313	315
2141316318	316	318
2141319321	319	321
2141322324	322	324
2141325327	325	327
2141328330	328	330
2141331333	331	333
2141334336	334	336
2141337339	337	339
2141340342	340	342
2141343345	343	345
2141346348	346	348
2141349351	349	351
2141352354	352	354
2141355357	355	357
2141358360	358	360
2141361363	361	363
2141364366	364	366
2141367369	367	369
2141370372	370	372
2141373375	373	375
2141376378	376	378
2141379381	379	381
2141382384	382	384
2141385387	385	387
2141388390	388	390
2141391393	391	393
2141394396	394	396
2141397399	397	399
2141400402	400	402
2141403405	403	405
2141406408	406	408
2141409411	409	411
2141412414	412	414
2141415417	415	417
2141418420	418	420
2141421423	421	423
2141424426	424	426
2141427429	428	429
2141430432	430	432
2141433435	433	435
2141436438	436	438
2141439441	439	441
2141442444	442	444
2141445447	445	447
2141448450	448	450
2141451453	451	453
2141454456	454	456
2141457459	457	459
2141460462	460	462
2141463465	463	465
2141466468	466	468

PRODUCT CODE	OUTSIDE DIAMETER OF PIPE MIN (mm)	OUTSIDE DIAMETER OF PIPE MAX (mm)
2141469471	469	471
2141472474	472	474
2141475477	472	477
2141478480	478	480
2141481483	481	483
2141484486	484	486
2141487489	487	489
2141490492	490	492
2141493495	493	495
2141496498	496	498
2141499501	499	501
2141502504	502	504
2141505507	505	507
2141508510	508	510
2141511513	511	513
2141514516	514	516
2141517519	517	519
2141520522	520	522
2141523525	523	525
2141526528	526	528
2141529531	529	531
2141532534	532	531
2141535537	535	537
2141538540	538	540
2141541543	541	543
2141544546	544	546
2141547549	547	549

**PACIFYRE® MARK II FIRE STOPS - TYPE 2**



**FOR PLASTIC PIPES**



Standard 205 long for plastic pipes.

PRODUCT CODE	OUTSIDE DIAMETER OF PIPE MIN (mm)	OUTSIDE DIAMETER OF PIPE MAX (mm)
2151015017	15	17
2151018020	18	20
2154021023	21	23
2154024026	24	26
2154027029	27	29

PRODUCT CODE	OUTSIDE DIAMETER OF PIPE MIN (mm)	OUTSIDE DIAMETER OF PIPE MAX (mm)
2154030032	30	32
2154033035	33	35
2154036038	36	38
2154039041	39	42
2154042044	42	44
2154045047	45	47
2154048050	48	50
2154051053	51	53
2154054056	54	56
2154057059	57	59
2154060062	60	62
2154063065	63	65
2154066068	66	68
2154069071	69	71
2154072074	72	74
2154075077	75	77
2154078080	78	80
2154081083	81	83
2154084086	84	86
2154087089	87	89
2154090092	90	92
2154093095	93	95
2154096098	96	98
2154099101	99	101
2154102104	102	104
2154105107	105	107
2154108110	108	110
2154111113	111	113
2154114116	114	116
2158117119	117	119
2158120122	120	122
2158123125	123	125
2158126128	126	128
2158129131	129	131
2158132134	132	134
2158135137	135	137
2158138140	138	140
2158141143	141	143
2158144146	144	146
2158147149	147	149
2158150152	150	152
2158153155	153	155
2158156158	156	158
2158159161	159	161
2158162164	162	164
2158165167	165	167
2158168170	168	170

**SAFETY DATA ON-LINE**  
[www.kemedwards.co.uk](http://www.kemedwards.co.uk)

**PACIFYRE®**

**PACIFYRE PART NUMBERS FOR METAL PIPES**

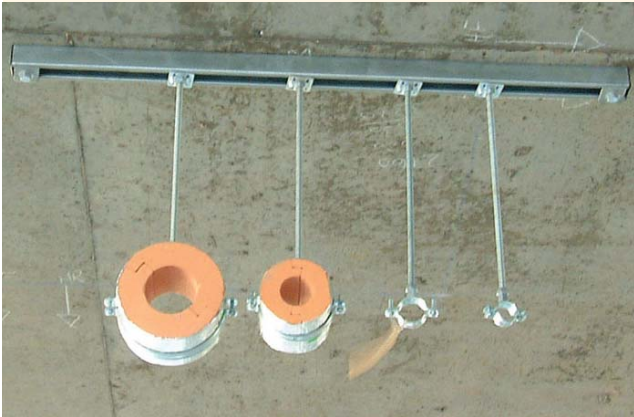
PIPE NB	SIZE (mm)	SIZE (mm) cu	INSULATION THICKNESS						
			UN-INSULATED	15(mm)	20(mm)	25(mm)	30(mm)	40(mm)	50(mm)
-	-	15	2141015017	2141045047	2141054056	2141063065	2141075077	2141093095	2141114116
15	21	22	2141021023	2141051053	2141060062	2141069071	2141081083	2141102104	2141120122
20	27	28	2141027029	2141057059	2141066068	2141075077	2141087089	2141105107	2141126128
25	27	35	2141033035	2141063065	2141072074	2141084086	2141093095	2141114116	2141132134
32	42	42	2141042044	2141072074	2141081083	2141090092	2141102104	2141120122	2141141143
40	48	-	2141048050	2141078080	2141087089	2141096098	2141108110	2141126128	2141147149
-	-	54	2141054056	2141087089	2141093095	2141102104	2141114116	2141132134	2141153155
50	60	-	2141060062	2141090092	2141099101	2141108110	2141120122	2141138140	2141159161
-	-	66	2141066068	2141096098	2141105107	2141114116	2141126128	2141144146	2141165167
65	76	76	2141075077	2141105107	2141114116	2141126128	2141135137	2141156158	2141177179
80	89	-	2141087089	2141117119	2141129131	2141138140	2141147149	2141168170	2141189191
-	-	108	2141108110	2141138140	2141147149	2141156158	2141168170	2141186188	2141207209
100	114	-	2141114116	2141144146	2141153155	2141162164	2141174176	2141192194	2141213215
-	-	133	2141132134	2141162164	2141171173	2141183185	2141192194	2141213215	2141231233
125	140	-	2141138140	2141168170	2141180182	2141189191	2141198200	2141219221	2141240242
-	-	159	2141159161	2141189191	2141198200	2141207209	2141219221	2141237239	2141258260
150	-	-	2141168170	2141198200	2141207209	2141216218	2141228230	2141246248	2141267269

**T 01932 754700 F 01932 754754 E sales@kemedwards.co.uk**



**NEW FABRICATION SERVICE FOR PIPE SUPPORT SOLUTIONS**

Kem Edwards Ltd. has launched a new pipe support fabrication service that presents a viable alternative to preparing and assembling channel supports on-site.



Working to your pipe schedule and required dimensions, Kem Edwards can quickly supply a fully constructed, palletised delivery of all modules, each individually labelled with pipe sizes and location details.

Simply provide us with your pipe schedule and required dimensions and we can supply your completed modules to site ready for installation.

- Reduce time and skills needed on-site
- Reduce wastage
- Improve quality
- Increase convenience and simplify ordering



Example of information required: -

One module to 1 metre length, 4 pipes to be supported, 450mm drop to centre of pipe i.e.

- Pipe 1 65nbCHW F Phenolic thickness 40mm
- Pipe 2 32nbCHW R Phenolic thickness 30mm
- Pipe 3 25nbHTG F
- Pipe 4 20nbHTG R

For further information please contact the sales office:  
 Tel: 01932 754700 Fax: 01932 754754 or  
 e-mail: [sales@kemedwards.co.uk](mailto:sales@kemedwards.co.uk)

